



Capistrano Sentinel - Pam Beckler



Juicy Fruit - Sharon Tietjen



What I Ask of You - Do Mi Stauber



Hunters at Play - Thomas M. Thayer Jr



A New Zealand Delight - Judy Alortz

• WINTERCOLOR •

A group show by members of the Seattle Chapter
of the Colored Pencil Society of America
from January 7 until February 1, 2007

You are invited to an opening reception

Sunday · January 7 · from 1-3 pm
University Unitarian Church
6556 35th Ave NE · Seattle WA



Soap Lake - Melissa Meyer



Driftwood Recovery Unit - Eileen Sorg



After the Storm Passes - Debra Rexroat



Pigs Come Wild - Suzanne Albright



Cherry Brandy - Iris Stripling

This digital postcard is available on cpsa207.org. Look for the link on the home page.

In this issue

- 2 • Next meeting information
- 3 • From the President
- 4 • Entry form for the Book Project
- 5 • Workshops & Classes, Members in the News
- 6-7 • Salon de Refuges
- 8-11 • At the Last Meeting
- 12 • Membership information



Kristen Doty • *Half Full*

Kristen Doty is the most recent Seattle member to add her image to the gallery section of our CPSA207.org web site. If your image is not already on, don't wait any longer! And remember, you can update or change your image any time.

EXECUTIVE BOARD

PRESIDENT

Sheila Theodoratos

VICE PRESIDENT

Susan Jones

SECRETARY

Eileen Sorg

TREASURER & MEMBERSHIP

Teri Hamilton

IMMEDIATE PAST PRESIDENT

Paula Parks

VOLUNTEER POSITIONS

ARTISTS' BIO BOOK

Sharon Tietjen

CALL FOR ENTRIES

Kay Dewar

**CHAPTER HISTORIAN
& PHOTOGRAPHER**

Heidi J. Lindberg

EXHIBITION COORDINATORS

Mary Foote

MEETING GREETER

Larry Lindberg

NEWSLETTER EDITOR

Pam Belcher

News deadline: The 20th of each odd numbered month.

PHONE TREE

Kay Moore Dewar

SLIDE BANK COORDINATOR

Wendy Buck Lane

DC 207 WEB SITE MASTERS

Kay Moore Dewar

Pam Belcher

Next Meeting:

*January 13 • 11am - 2pm
Slides from 2006 International*

Richmond Beach Library

Board meets from 10-11 am.

General Meeting starts at 11 am and runs until @ 2 pm

PROGRAM: Slides and comments of the 2006 CPSA Show in Albuquerque. Bring a sack lunch. Hot chocolate and teas provided. Treat patrol folks are Kelly Patterson, Mary Foote and Danny O'Rourke.

If you have a question about the weather, call Sheila or any of the board members.

Richmond Beach Library

206/546.3522

Directions: From I-5 north or south take the N 175th street exit and head west. Continue to Aurora Avenue (Highway 99) and turn right. Turn left at N. 185th street (Richmond Beach Road) and travel down the hill approximately 2.5 miles. There is a four-way stoplight at 20th NW and NW 196th, take a right turn onto 21st to enter the library parking lot.

We need YOUR image!

Check out our chapter website,
cpsa207.org
for meeting information,
upcoming show information,
historical things,
and the gallery!

If you are a chapter member,
and would like to add
your image
to the gallery,
send a jpg, slide or photo
to Pam Belcher
(see page 2 for address)
along with a blurb
about the piece
and your permission
to put it on the web.

For inspiration, see the
web site to see what
your fellow artists have done.

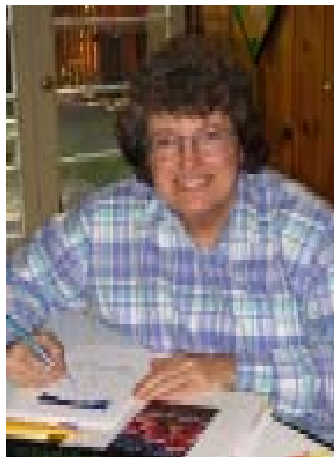


ART & SOUL
2860 NW Market St. Seattle, WA 98107
206·297·1223



Specializing in art reproduction
and digital pigment printing

From the President



Whew! Thanks to Elaine Wood for saving our November meeting! On Friday afternoon she realized the libraries were closed Veterans' Day weekend, and called me. I was busily preparing for the next day's meeting, oblivious to the site closure. Thanks to those who helped telephone our chapter members, we were able to change the November meeting place at the last minute...to my basement. It was a wee bit crowded to say the least, but a wonderful meeting and a program full of ideas, tips and techniques. Thanks to our secretary Eileen Sorg for getting the program started and moderating it. I'm grateful to all who participated. So many more members have much to share as well! We just touched the tip of the iceberg!

To extend our art and ideas around the U.S. (and beyond!!), the Seattle chapter voted to participate in the production of a book of art tips with full color photos of our original artwork to illustrate them. Target date for completion: July 2008...just in time to go on sale at the convention! Our talented newsletter editor Pam Belcher has agreed to be layout director.

I figure we have one year to collect and edit art and articles from, hopefully, ALL of our chapter members. Make sure to add to your New Year's list of Resolutions to participate in our chapter's art book! See the book entry form in this issue for more info. You don't have a clue on what you'd present? I've been "noodling" on this, and have a list of ideas/subjects already listed as possibilities for many of you! Can you tell... I am jazzed about this project, not to mention being so very proud of all our chapter artists? *See page 3 for the entry form. Think about it, and turn in your information.*

And yes, Seattle will be hosting the 2008 CPSA International Exhibition/Convention. We have a year and a half to prepare for this wonderful event. We are sooo lucky to have three of our local members on the National Board: Exhibition Director Paula Parks, Vice President of Finance Patti Greene, and Webmaster Kay Dewar. I feel confident and am excited to invite fellow colored pencil artists and supporters to the Emerald City. This is an exciting opportunity for all of us. Stay tuned for upcoming committees and ways to get involved!

Wishing us all,
Peace!
Health!
Happiness!
And a Wonderfully
Creative New Year!
Sheila



Sheila's basement

Our chapter has decided to make a book showcasing our art and sharing tips, techniques and insights as to how we work, how we are organized – how we “make art”. The book will be printed in full color on heavy slick paper, 8.5” x 5.5” with a wire binding. Depending on participation, the length of the book will vary. Many times, we don’t think that what we do or how we create is different or interesting to others. Think again! We all have various ways we are inspired, think, observe, approach, work on, and title our paintings. Join in on this fun and worthwhile project.

Articulate your art! You may include studio tips, step-by-step demo, materials, C.P. & mixed media, tools you make or use, benefit of trying it “your way”, or your thought process getting an idea... then getting to paper. If you need some prodding, here are some questions to possibly help you get your ideas flowing:

- What steps do you take to move your idea from concept to paper?
- Do you do any research before you start drawing? What does this entail? How does it contribute to the outcome?
- What set you on fire and caused you to draw and complete a certain project?
- What is a mistake/unexpected result you learned from and what came out of it?
- How do you develop your composition?
- How do you choose your palette? Do you think about color schemes?
- How do you combine several pieces of reference material into a single vision?
- Have you done a series? How did you come up with the idea in the first place and how do you stay interested?
- What did you do to dig yourself out of the last rut you were in?
- When you become bored with what you’re doing, how do you challenge yourself anew?

CALL FOR ENTRIES! DC 207 ART BOOK
Early contact & entries are encouraged & appreciated!
Title/Subject Matter Deadline: August 31, 2007
Final Materials Deadline: Dec. 31, 2007

Send one copy to: Sheila Theodoratos • _____
 and a copy to: Pam Belcher • _____

Name _____ Are you a signature member? Yes ___ No ___
 E-mail address _____ Website _____

Title of tip, technique, or topic you’d like to share: _____
 If there’s room, here’s another idea: _____

Send a photo, slide or jpeg image (300 dpi at 5” wide). To show a step-by-step, send up to 4 images. If you want to show a detail, Pam can crop and blow up a section(s); send a hard copy with the area(s) marked. You may send 2 different pieces of your artwork that demonstrate the same tip/technique/topic. If your tip/technique/topic can be covered with one image don’t feel you have to send more.

#1. **Artwork** title: _____ Unframed H _____ x W _____
 Ground (kind of paper, wood or ?) you are draw/painting on? _____
 100 % colored pencil? ___ Yes. If not, additional media: _____

#2. **Artwork** title: _____ Unframed H _____ x W _____
 Ground (kind of paper, wood or ?) you are draw/painting on? _____
 100 % colored pencil? ___ Yes. If not, additional media: _____

Include a **typed statement** (preferably in 200 words or less) of the tip, technique or concept you’d like to share. Include your name, phone # and e-mail on your statement. Editors will be standing by, ready to help your entry shine! Feel free to informally run an idea by Sheila or Pam even before you fill out and send in this form.

I give my permission to CPSA dc 207 to publish my tip and original images (herein described) in the chapter book, and in possible promotional material. I understand that all proceeds from the sale of this book will be used as a chapter fundraiser.

Signature: _____ Date: _____

Workshops & Classes

ANNE deMILLE FLOOD •

Classes held at Anne's home studio, Tacoma Washington. anne@annedemilleflood.com.

••*Architectural Landscapes in Colored Pencil*

March 31st and April 1st, 2007/10am-4:30pm

Two day workshop covers techniques for rendering landscapes that glow with light while incorporating some architectural features like shiny surfaces, neon lights, reflections, sunsets and compositing images together to create an urban landscape. Both days \$130. Class size is limited to 12 students. Prior colored pencil experience recommended.

••*Realistic Pet Portraits in CP*

March 17, 2007: Getting Started, Cat features & eyes
March 18, 2007: Canines and Birds

This class is designed to help you master the techniques for drawing realistic pet portraits that capture your pet's unique personality. Special attention will be placed on creating the jewel like effect of the feline eye and capturing the endearing quality of the canine face. Both Days \$130. Class size is limited to 12 students. This class is recommended for novice artists.

ANN KULLBERG •

Check www.annkullberg.com for info and registration forms for all workshops listed here.

••*Colored Pencil on the High Seas Workshop* - May 20-27, 2007. A seven day Alaskan Inside Passage Cruise with 3 workshops on board from: Ann Kullberg, Anne deMille Flood & Nicole Caulfield. Cruise embarks in Seattle!



••*Double Workshop! Alyona Nickelsen & Ann Kullberg* (may be taken separately). June 8-10, 2007 Federal Way.

••*Ann Kullberg: Portraits 1* - June 11-14, 2007.

TERI HAMILTON •

••*Beginning Drawing & Colored Pencil - Ongoing class* Tuesdays 7pm - 9pm • *Teri is only there on the 1st Tuesday of every month. Students meet without her on the other weeks.*

Spill the Paint Art Studio ("the goat house")
416 228th Ave. SE • Sammamish • 425-837-0026

KRISTY KUTCH •

11555 W. Earl Rd., Michigan City, IN 46360
kakutch@niia.net • www.artshow.com/kutch

••*Colored pencil mini-workshops*. Cheap Joe's Art Stuff Boone in June art festival event, mid June 2007. www.cheapjoes.com. 1-800-227-2788 edwina@cheapjoes.com. All levels.

••*Colored pencil/watercolor pencil workshop*. Some drawing experience helpful. Grand Marais Art Colony, Grand Marais, MN. July 9-13, 2007. Jane Johnson 800-385-9585, arts@boreal.org, www.grandmaraisartcolony.org.

MELISSA MEYER •

••*Colored Pencil Classes* • Renton Senior Art Room
Usually for six-week sessions, and occasionally one-afternoon, three-hour workshops. You don't have to be a member to join. Call Melissa if interested.

DANNY O'ROURKE •

•• *Drawing, Colored Pencil, Pen & Ink*
Thursdays 11 am to 2:30 pm
Northshore Senior Center, Bothell WA

SHEILA THEODORATOS •

••*Beginning Colored Pencil* classes held at her home in Shoreline on second and fourth Wednesdays 4-6 pm. She is now accepting new students for the 7-9 pm session. Call for more information.

SHARON TIETJEN •

••*Several Watercolor demonstrations coming up*. See her website for details: www.sharontietjen.com
••*Animal Close-ups in Colored Pencil with Watercolor* (Beginning to Advanced). Aug 6-10, 2007. Bend, OR. Art in the Mountains. www.artinthemountains.com.

DO MI STAUBER •

••*Beginning Colored Pencil* eight-week class through Emerald Art Center in Springfield, Oregon in early 2007 on a weekday eve. 541-726-8595, www.emeraldartcenter.org.

Members in the News

••**Helen Haynes** won 2 blue ribbons at the Evergreen State Fair for *Sacred Datura* and *Victoria's Secret*.

••**Kristy Kutch** has a new instructional DVD Colored Pencil Landscapes: Beyond the Basics. It was filmed through www.artistpaletteproductions.com and is now available through www.cheapjoes.com.

••**Heidi Lindberg** sold *Into*. She also received the Eloie Weiner Award from Women Painters of Washington.

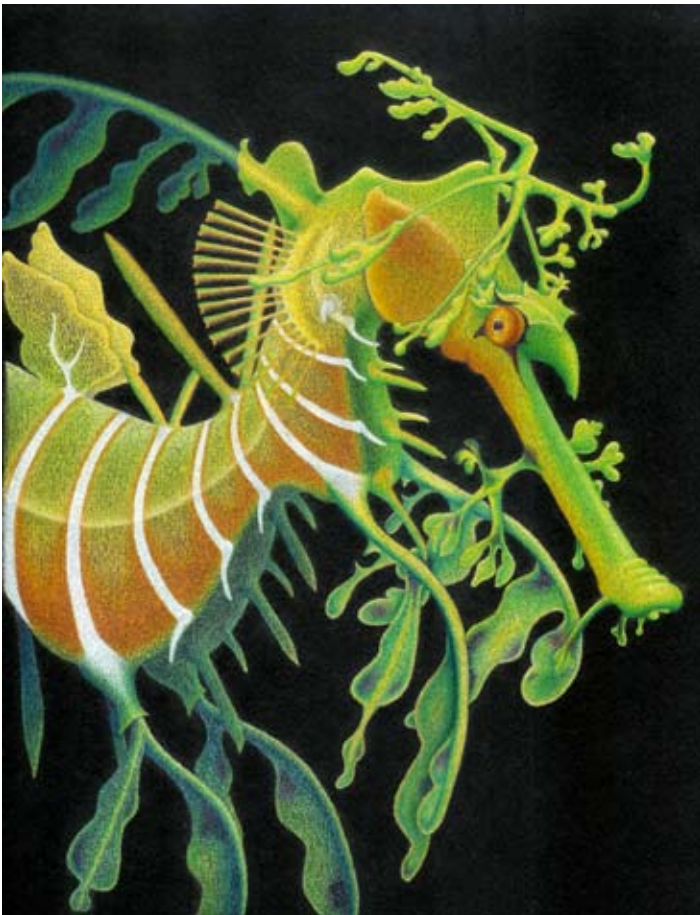
••**Judy Moritz** sold *The Bunny* at Cottage Lake Artist Guild Show before it was finished. Sharon Tietjen helped her with ideas and demo to finish it.

••**Paula Parks** is one of 50 finalists, out of 1742 entries in the Blossom-art of flowers competition. She's thrilled, of course!

••**Sueellen Ross** is now represented by two galleries: Leslie Levy Fine Arts gallery in Scottsdale, Arizona and Howard/Mandville in Kirkland.

••**Tom Thayer** took 2nd place in the Snohomish show.

••**Ranjini Venkatachari** received a Merit Award for *Red Daisy* in the 8th Annual Juried Show at Art Port Townsend.



Susan Jones • *Samba*



Carol Gill • *Morning Shadows*



Le Salon des Refuses

DC 207's pieces
juried out of the
14th Annual CPSA
International
Exhibition
in Albuquerque,
New Mexico

Kelly Patterson CPSA
Bordertown Survivor



Sheila Theodoratos CPSA • *Cracking Up*



Kristy Kutch CPSA • *Ben's Bouquet*



Wendy Lane • *Blue Italian*



Do Mi Stauber • *What I Ask of You*



Sharon Tietjen CPSA • *Juicy Fruit*

At the Last Meeting: Susan Jones & Sheila Theo

WinterColor is coming ... The CPSA Seattle Chapter's winter show is happening from January 7 through February 2, 2007. To get show postcards for snail mail distribution, please contact Pam Belcher (contact info on page 2) and she will send them to you. Pam will also be creating a digital postcard which she will send to everyone who has email. Pam will send all artists who have submitted work an information sheet regarding all the art deliver details. **Gallery Opening and Artist's Reception: Sunday, January 7th, 1-3pm. PLEASE COME and BRING FRIENDS.** Fingerfood will be provided by: Judy Moritz, Kelly Patterson, Susan Jones, Sharon Tietjen, Ranjini Venkatachari and Sheila Theodoratos. Giclées and cards may be sold *only* at the opening. Pam will bring a card display rack. IF you have not entered a piece into the show, you may still bring cards and giclees to sell at the opening. All giclees must be accompanied by a certificate of authenticity from the printer. Every piece must be labeled with your name and a price.

Next Meeting will be January 13, 2007. We will view slides from the 2006 International Show. Volunteers bringing treats to the meeting: Kelly Patterson, Mary Foote and Danny O'Rourke.

CPSA 207 Scrapbook: Heidi Lindberg has been maintaining the Chapter's scrapbook and is always looking for scrapbook contributions, as well as a new volunteer to take over the responsibility. If you are ever featured in an article or an individual show, please send her the article or announcement.

Dues are Due! It's time to join or renew your membership in the local and national CPSA. Membership dues help defray the costs of a whole host of individual and group benefits – from the International Shows, membership directory, lightfastness testing, *To the Point* newsletter and the overall promotion of colored pencil as a serious art medium to local workshops, retreats, shows and events. Please submit your membership dues today! *Please note:* Membership depends on joining the national as well as the local chapter of CPSA – one cannot join the local chapter without national membership.

International Show Update: The 2007 International Show takes place in Bethesda, Maryland. Deadline for submission of slides is March 31st, 2007. Our March meeting will be dedicated to sharing potential entries, and getting last minute critiques before this deadline. Bring your slides or original artworks to this meeting!!

The 2008 International will be held here in Seattle – the hotel for visitors' accommodations will be the Renaissance Hotel in downtown Seattle; the show venue is Seattle's Washington State Convention & Trade Center.

CPSA 207 Chapter Book of Tips and Techniques: Sheila Theodoratos proposed a Chapter project, a compendium of colored pencil tips and techniques from the Chapter members to be published in a wire-bound book form and sold as a fundraiser at the 2008 International Show. The membership overwhelmingly approved the idea by vote. This was inspired by the Chicago chapter's 2005 publication Techniques & Tips.

- Each member is asked to submit image(s) and text – Sheila has suggestions for members if they cannot think of a topic. *See page 3 for the form.*

- Idea submission is August 31, 2007. Submission deadline of complete materials is December 31, 2007. However, materials may be submitted at any time before that date and would be appreciated by those who are in charge of putting this book together. Books will be ready July, 2008, to be sold in Seattle at the CPSA International Show.

Mixed-Media Presentations moderated by Eileen Sorg



Eileen Sorg

Eileen Sorg has developed an "oil on canvas" look for her wonderful figures and portraits. She demonstrated mixing colored acrylic paint with marble dust, and used a cheap house brush to add texture and grain as she stroked two perpendicular layers onto her museum board or paper. She can vary the amount of tooth and texture by

At the Last Meeting...

preparing the ground herself. (Eileen even makes her own pastels...from scratch!) She transfers her preliminary drawings via white Saral paper. She starts with harder pencils, and finishes with softer. Eileen admits to having a heavy hand. For her animals, Eileen works with FW Ink, watercolor and colored pencils, on 140 lb. Arches hot press taped to Gator Board. She praised the “master” of this mixed media technique...

Sueellen Ross. Sueellen showed and discussed her *Kitty on a Pillow* class project, explaining how and why she developed the carefully outlined, 13-step, one-week course. The project, designed for acrylic, ink, watercolor and colored pencil, is explained at each step with photo illustrations.



Sueellen Ross

Kristen Doty detailed her process creating a piece incorporating the drawing of calligraphic text and an image. She chose Fabriano Tiziano paper in a felt gray for its color and lightfastness. The paper turned out to be heavily sized and textured, causing struggles later on. Kristen employed colored pencil, charcoal, pastel and watercolor. Beginning with a digital image of a *Phalaenopsis* orchid, Kristen scanned the lettering to determine size and layout. The final layout was transferred with Saral transfer paper. Black pastel was scraped onto the paper and blended in with a brush to darken the background. White charcoal (Prismacolor brand found at Aaron Bros. is whiter than General's) was applied under the lettering, sealed w/ white



Kristen Doty with Sharon Tietjen and Susan Jones

colored pencil, then color was added. The flower image was laid in with colored pencil – the paper had to be sanded in spots to accept the pencil. Kristen does not spray her work. **Sharon Tietjen** pointed out that she uses a cool hairdryer to blow off pastel debris.

Heidi Lindberg shared her extensive and detailed home-made color chart with the group. The chart was painstakingly created and protected with plexiglass, and large enough that the information is displayed on a single page, allowing quick and easy color identification without flipping through pages of color samples, as with other color charts.

Pam Belcher shared her fascinating piece of a highly textured tree bark section *Burl of Bruin*, based on a tree she saw on the UCLA campus. She did the entire piece using Caran d'Ache Pablo pencils. She liked these pencils very much as they are halfway between Prismacolors and Faber Castell Polychromos, the pencil brands she usually uses. They are a bit harder than Prismacolors but are very close to their color saturation, and do not appear to be waxy. She also used a variety of graphite pencils, a blue colored pencil and a stomp to blend the background.

At the Last Meeting...



Sheila Theodoratos with Helen Haynes

Helen Haynes asked for critique on her two pieces, *Victoria's Secret* and *Approaching Storm*. Members offered suggestions for darkening the backgrounds, making the light of the foreground more apparent, as well as having a black & white photocopy made of the pieces – value issues become readily apparent when the color information has been removed.



Paula Parks

Paula Parks demonstrated the process of frotage, a special method of creating textures in images. She showed squares of various frotage textures created by applying modeling paste and gesso on boards, then impressing, sculpting or otherwise creating the desired texture in the material before it hardens. Placed under lightweight paper which is then rubbed with Prismacolor Art Stix, the texture becomes colorfully apparent. She recommended mulberry paper for its light weight, color selection and archival & lightfast properties. It is available at JoAnn Fabric and Crafts. The colored and textured paper may then be cut up and collaged with acrylic matte medium for dramatic effect. She showed a wonderfully dynamic, colorful collage entitled *Raven Stealing the Sunlight*, based on northwest Native American mythology.



Ranjini Venkatachari

Ranjini Venkatachari shared her fun new mixed media piece. She experimented with Colorfix primer, Faber Castell pastel sticks on pastelboard, then sprayed it with Krylon's workable fixative. The colorful top layer was from colored pencils.

At the Last Meeting...



Kelly Patterson

Kelly Patterson showed the heartbreak of disappearing pink tones on one of her wonderful portraits. Kelly is now trying to paint pink undertones as a safeguard, then applying colored pencil over them. She showed several examples of her experiments. She also experiments with watercolor, ink and colored pencil. She likes Arches 140 lb. hot press paper. She has been working the last year on a family portrait. She goes for BIG challenges. The painting is 6 FEET x 4 FEET!!!



Mary Foote

Mary Foote showed the book of poetry entitled Decked and Dancing, by Christine Smart and published by Hedgerow Press, Canada, containing 5 of Mary's pen/ink sketches and the cover.

Hopefully, we, as pro-tem secretaries, caught at least some of the wonderful flavor of the meeting. Suggestions and questions were zooming around the room, and we got caught up in the hubbub, sometimes forgetting to jot down a note! If we left out your suggestion...we apologize. We have a whole new appreciation of our wonderful secretary's (Eileen Sorg's) job!

Susan Jones & Sheila Theodoratos

Discussion: To spray or not to spray...that is the question!

- Danny O'Rourke: Don't spray on black.
- Eileen Sorg: Uses a light coat of Prismacolor or Krylon workable fixative.
- Suellen Ross: Uses Prismacolor workable spray.
- Sharon Tietjen: Don't spray on "virgin" paper. It will yellow. Make a cutout paper shield.
- Paula Parks: Laxcaux is expensive, but she's heard very good things about it.
- Heidi Lindberg: Don't combine sprays! She spoke of a disastrous reaction that made peeling bubbles all over her art, ruining a completed landscape.
- About half of the group said they don't spray at all.
- Paula Parks will ask Betsy Holster, CPSA Product Research Director, to conduct lightfast tests on differing glasses, plexiglass and sprays.



Colored Pencil Society of America
Seattle · District Chapter 207

Seattle District Chapter dues are \$18. November 1 through October 31. Out of State member dues are \$12. DC 207 meets the second Saturday of January, March, May, July, September and November unless otherwise noted.

DC 207 membership & renewal form

NAME: _____

ADDRESS _____

STATE _____ ZIP _____

PHONE: _____

EMAIL (print clearly!):

Circle one: NEW RENEWAL

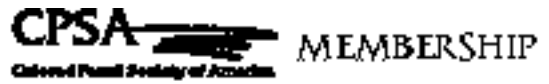
DATE _____

Mail with your check (payable to CPSA DC 207) with the completed form to:
Teri Hamilton

PLEASE NOTE: The rules state that you must be a member of the National CPSA to be a member of local CPSA chapter. **You need to write TWO CHECKS:** one to the National CPSA and one to your local CPSA chapter. The Seattle DC 207 CPSA Chapter **will not accept** monies or forms filled out for National CPSA membership. Please **DO NOT** write one check for both memberships.

Sat. January 13
11am - 2 pm
Richmond Beach Library
2006 International Slides

Local & National Application & Renewal Information



When you join CPSA, you receive the following benefits:

- Active and in format in CPSA website - www.cpsa.org
- Subscription to the national CPSA newsletter TO THE POINT
- Product Research, pigment and lightfast information
- Member's name entry fee to CPSA's Exhibitions
- The Annual International Membership Directory
- Access to District Chapters for local or regional networking

MEMBERSHIP APPLICATION

Membership starts Nov. 1 each year; no prorated dues. Please return this form with your check payable to: CPSA.

Cynthia Hease, Membership Director
8156 E South Wadsworth Blvd. #184, Littleton, CO 80120
email: membership@cpsa.org

Members must be 18 years or older.

Dues: \$40 (US funds) / US or Canada

\$45 (US funds) / all other countries

\$500 (US funds) - Lifetime Membership

Note: Amounts in excess of dues will be considered a donation.

- New member Change my contact information
 I am an instructor of colored pencil workshops
 Please contact me about starting a chapter in my area.

Check here if you do NOT wish your name published in directory.

NAME	
STREET ADDRESS	
CITY	STATE
ZIP/POSTAL ZONE	COUNTRY
PHONE (INCLUDE AREA CODE)	
EMAIL	
END (VACATION) ADDRESS (more than 3 months)	
CITY/STATE/ZIP	
STATE (D/CA/MO)	END (D/CA/MO)

2006

www.cpsa.org

NW Drawing Points

